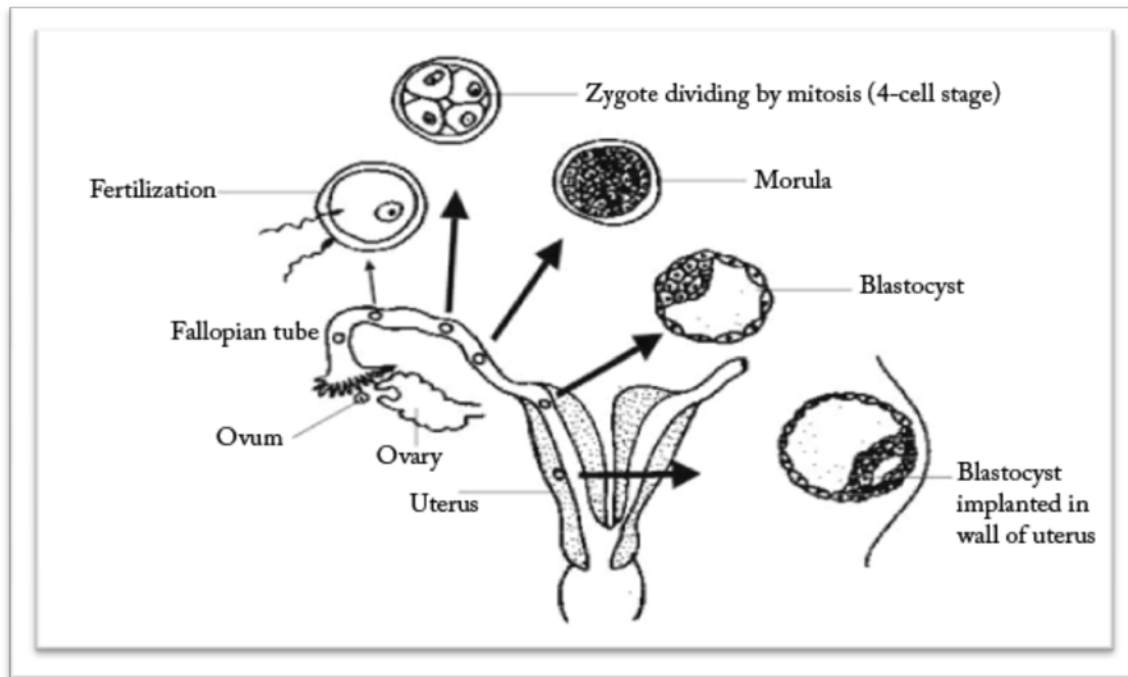


Name _____

Date _____

Period _____

Development and Implantation of the Embryo



[Image by Ruth Lawson, Otago Polytechnic, Creative Commons License: <http://creativecommons.org/licenses/by/3.0/>]

Label the following structures with their matching terms:

- uterus (wall of uterus)
- ovary
- fallopian tube
- ovum

Label the following stages of embryonic development with their matching terms:

- fertilization
- zygote dividing by mitosis (4-cell stage)
- morula
- blastocyst
- blastocyst implanted in wall of uterus