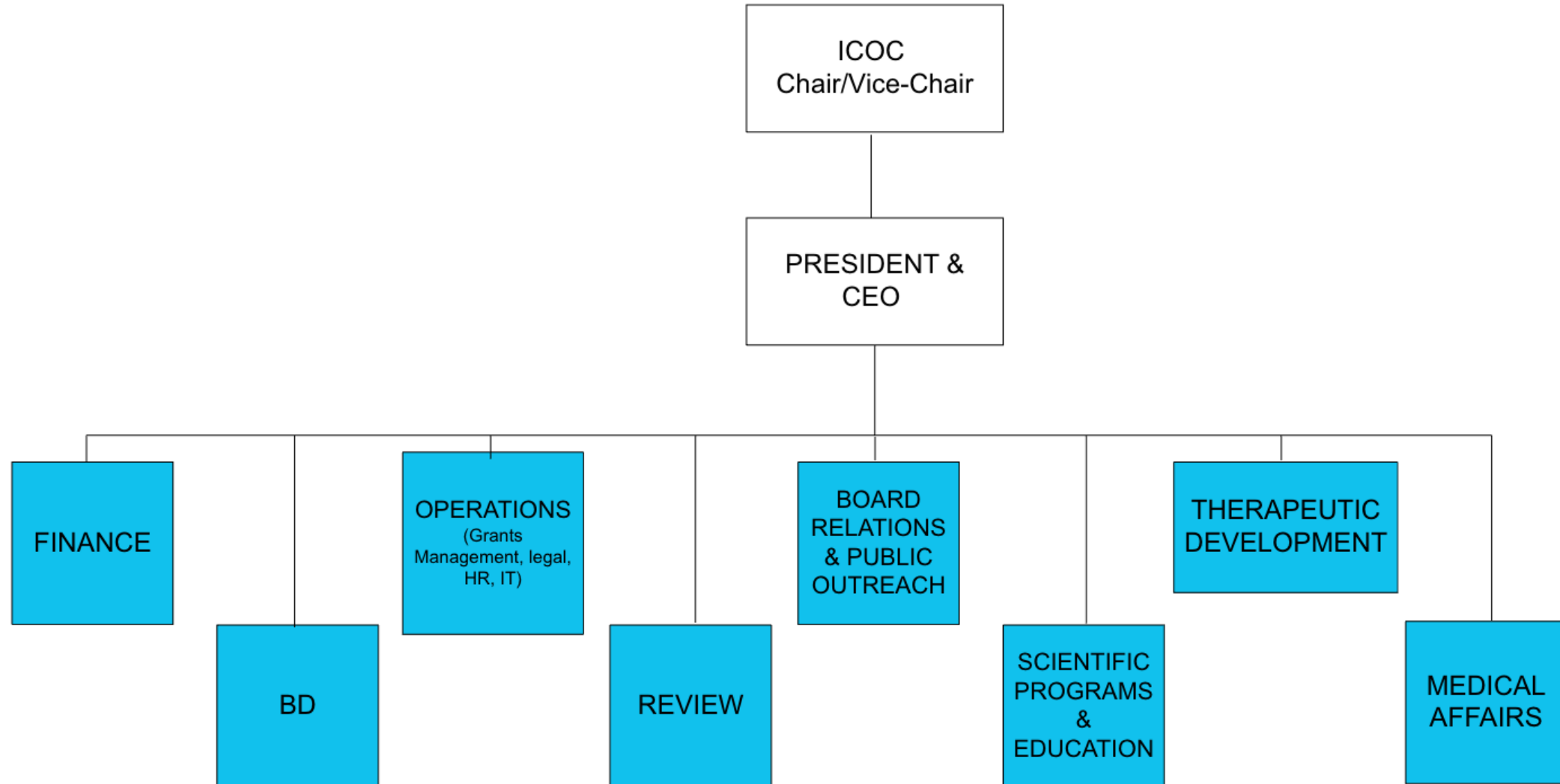


Updates to the CIRM Organizational Chart

Jonathan Y. Thomas, JD, PhD
President/CEO CIRM
Governance Subcommittee Meeting
September 12, 2024



CIRM 2021 Organization Chart



Executive Summary

Purpose of Realignment:

- **Enhance** capacity to implement Strategic Allocation Framework (SAF) recommendations
- Address elements identified in the FY22-23 Performance Audit

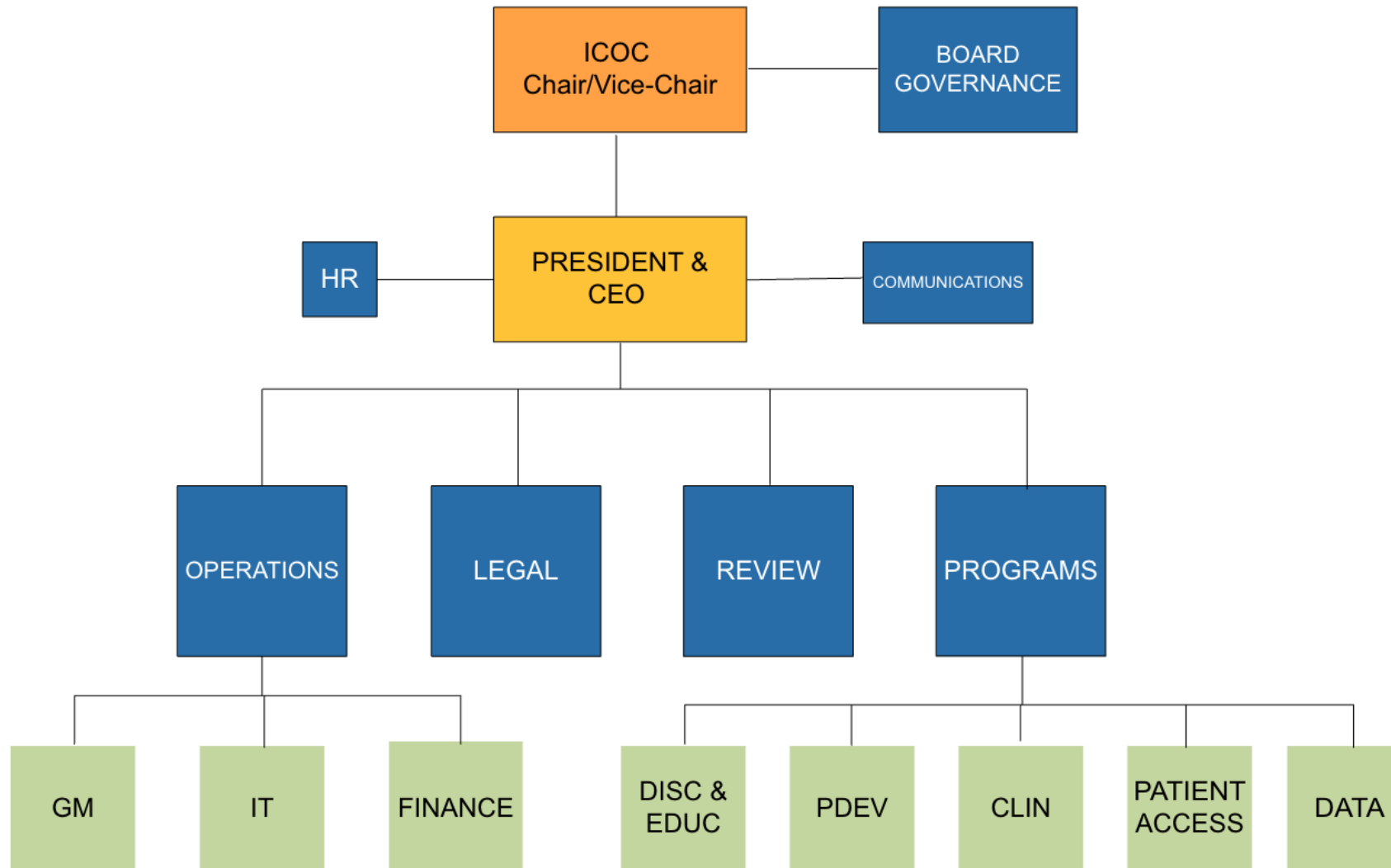
Key Goals:

- 1. Enhance Cross-Departmental Collaboration:** Break down existing silos to foster a more integrated and collaborative working environment across all program teams
- 2. Increase Organizational Productivity:** Streamline processes and improve coordination between departments to ensure more efficient and effective execution of strategic initiative
- 3. Align Functions with Strategic Priorities:** Ensure all teams are working towards common goals, closely aligned with patient outcomes and the organization's broader mission
- 4. Strengthen Data Infrastructure:** Improve the management and accessibility of funded data to accelerate research, development and drive innovation
- 5. Support Strategic Innovation:** Create a flexible and responsive organizational structure that adapts to emerging challenges and opportunities, enabling us to stay at the forefront of scientific and therapeutic advancements

Key Organizational Changes

- **Chief Science Officer (CSO) Role:**
 - Centralized leadership overseeing all programs
 - Integration of Discovery, Preclinical, Clinical, Infrastructure, Education and Patient Access functions
- **Creation of Preclinical Development Group:**
 - Focuses on accelerating therapies through early-stage trials
- **Executive Strategy Officer/Rare Diseases Role:**
 - Creation of executive strategy role for the development of central rare disease pilot platform program
- **Establishment of R&D Data Infrastructure Function:**
 - Develops and manages programs and resources to make CIRM funded research data findable, accessible, interoperable and reproducible, supporting SAF goals
- **Integration of Clinical Development with Patient Access:**
 - Ensures seamless transition from research to patient care

Proposed Organization Chart



C I R M

CALIFORNIA INSTITUTE FOR
REGENERATIVE MEDICINE

Thank You



CONTACT US

(510) 340-9101

INFO@CIRM.CA.GOV

601 GATEWAY BLVD, SUITE 400
SOUTH SAN FRANCISCO, CA 94080

CIRM.CA.GOV